



# **THE CHICAGO PLATFORM TENNIS CHARITIES**

## *APTA National Ranking Tournament & President's Cup Qualifier*

October 31<sup>st</sup>, November 1 & 2, 2003

**LOCATION:**

Chicago North Shore area clubs, semi-finals and finals at Glen View Club at 100 Golf Road, Golf, IL, Main Number 847-729-6500; Paddle House Number 847-657-0890.

**ENTRIES:**

**Deadline: October 24, 2003.** No refunds after this date. **Full APTA membership is required for all national ranking tournaments.** Applications will not be accepted without both players' APTA numbers or without full payment. **To obtain a number call the APTA at (888) 744-9490 or access the web site at [www.platformtennis.org](http://www.platformtennis.org).** Official APTA rules will govern play. All matches best of three sets. 12 point tie-breaker in all sets. Guaranteed 3 matches.

**NOTES:**

Men's Seniors 90+ (and Men's Seniors 115+) will require the combined ages of the players to be equal to or greater than 90 (or 115, respectively) as of January 1, 2003. There will be a foot fault judge roaming from site to site. The First call is played as a let, any call there after is a loss of point. *Rule 11 - APTA Official Rules of Platform Tennis.* **The judge's call will be final.**

**AMENITIES:**

Women's Open Tournament: Viking Balls, favor, Friday lunch & Saturday night barbeque. [Friday evening: informal gathering at Meier's Tavern, 847-724-0477, 235 E. Lake Ave. (not paid for by the tournament)].  
 Men's Open Tournament: Viking Balls, favor, Saturday lunch & Saturday night barbeque.  
 Men's Seniors Tournament: Viking Balls, favor, Friday lunch, & Saturday night barbeque.

**SCHEDULE:**

**No Women's check-in.** Download Draw from the CPTC website ([www.reveregroup.com/paddle](http://www.reveregroup.com/paddle)) for starting times and locations for both Men & Women.

Friday, Oct. 31 <sup>ST</sup>	9:00 am 8:30 am 9:00 am 11:30 am - 1:00 pm 12:00 pm 6:00 pm 6:00 pm - 9:00 pm	Women's tournament play Men's Seniors 90+ check-in and continental breakfast at Exmoor CC Men's Seniors 90+ tournament play at Exmoor CC Women's lunch at Glen View Club Men's Seniors 90+ lunch at Exmoor CC Women's informal gathering at Meier's Tavern <b>Viking Chicago Junior Clinic at GVC Paddle Hut</b> <b>Men's check-in at GVC Paddle Hut</b>
Saturday, Nov. 1 <sup>st</sup>	8:00 am & 9:00 am 8:30 am - 4:00 pm 11:00 am 2:00 pm 11:30 am - 1:00 pm 12:00 pm 4:30pm 5:00 pm	Men's Open tournament play Women's backdraw play Women's Semifinals at Glen View Club Women's Finals at Glen View Club Men's lunch at Glen View Club Men's Seniors 115+ tournament play at Exmoor CC Men's Quarterfinals at Glen View Club (cocktails begin at 4pm) Barbeque at Glen View Club Paddle Hut (casual attire)
Sunday, Nov. 2 <sup>nd</sup>	8:30 am 10:00 am 1:00 pm	Men's Open backdraw play Men's Semifinals at Glen View Club Men's Finals at Glen View Club

**FOR ADDITIONAL INFORMATION, CONTACT:**

<u>Men's Open and Women's Open</u>	<u>Men's Seniors 90's</u>	<u>Men's Seniors</u>
<u>115's</u> John Noble (Co-Chair) (W): 847-663-6935 (cell): 847-226-5030 <a href="mailto:john_noble@hyperion.com">john_noble@hyperion.com</a>	Ellen Magrini (Co-Chair)  (cell) 773-771-7179 <a href="mailto:ellenmagrini@aol.com">ellenmagrini@aol.com</a>	Howard Sipe (H): 847-295-7138 (W): 847-295-4186 <a href="mailto:sipe@ppg.com">sipe@ppg.com</a>

**30<sup>th</sup> ANNUAL CPTC TOURNAMENT October 31<sup>st</sup>, November 1, & 2<sup>nd</sup>, 2003**

**ENTRY FORM (please detach and send separately)**

Women's Open	\$85.00	per paddle	x _____	= \$ _____
Men's Open	\$85.00	per paddle	x _____	= \$ _____
Men's Seniors 90+	\$75.00	per paddle	x _____	= \$ _____
Men's Seniors 115+	\$75.00	per paddle	x _____	= \$ _____
Combined Events	\$130.00	per paddle	x _____	= \$ _____
Dinner Guest Saturday	\$35.00	per person	x _____	= \$ _____
Lunch Guests (Fri. or Sat.)	\$20.00	per person	x _____	= \$ _____
Total				\$ _____

**WILL YOU \_\_\_\_\_ OR YOUR PARTNER \_\_\_\_\_ BE ATTENDING THE SATURDAY NIGHT BARBEQUE? (Place a checkmark next to those attending)**

**WILL THERE BE ADDITIONAL GUESTS ATTENDING THE SATURDAY NIGHT BARBEQUE? HOW MANY? \_\_\_\_\_ (Please enclose \$35.00 per guest)**

**Proceeds from this year's tournament will go to:** The Prostate Cancer Program at Northwestern Memorial Hospital. The Prostate Cancer Program at NMH provides a comprehensive range of screening, diagnostic, treatment and rehabilitation services delivered by a multi-disciplinary team of physicians, nurses, and allied health professionals.

Charitable contribution: \$ \_\_\_\_\_

**TOTAL:** \$ \_\_\_\_\_

**(Please make checks payable to: CPTC tournament.** Additional contributions can be made out directly to: Northwestern Memorial Foundation (Prostate Cancer Program).

**HOTELS:** Renaissance North Shore, Northbrook, 847-498-6500; Red Roof Inn, Northbrook, 847-205-1755; Howard Johnsons, Skokie, 847-679-4200; Doubletree Hotel, Skokie, 847-679-7000; Extended Stay America (Closest to Tournament Central), Skokie, 847-663-9031.

Name: \_\_\_\_\_

Partner: \_\_\_\_\_

Address: \_\_\_\_\_

Address: \_\_\_\_\_

Phone: (H) \_\_\_\_\_

Phone: (H) \_\_\_\_\_

(W) \_\_\_\_\_

(W) \_\_\_\_\_

(e-mail) \_\_\_\_\_

(e-mail) \_\_\_\_\_

Club Affiliation: \_\_\_\_\_

Club Affiliation: \_\_\_\_\_

Current APTA #: \_\_\_\_\_

Current APTA #: \_\_\_\_\_

**Separate checks payable to "APTA" for APTA membership: \$40.00 Annual Membership.** If you are a member of a participating APTA league, your APTA membership fee has been included in your league fee (please make a note in "Current APTA #" section above if you are a "league player").

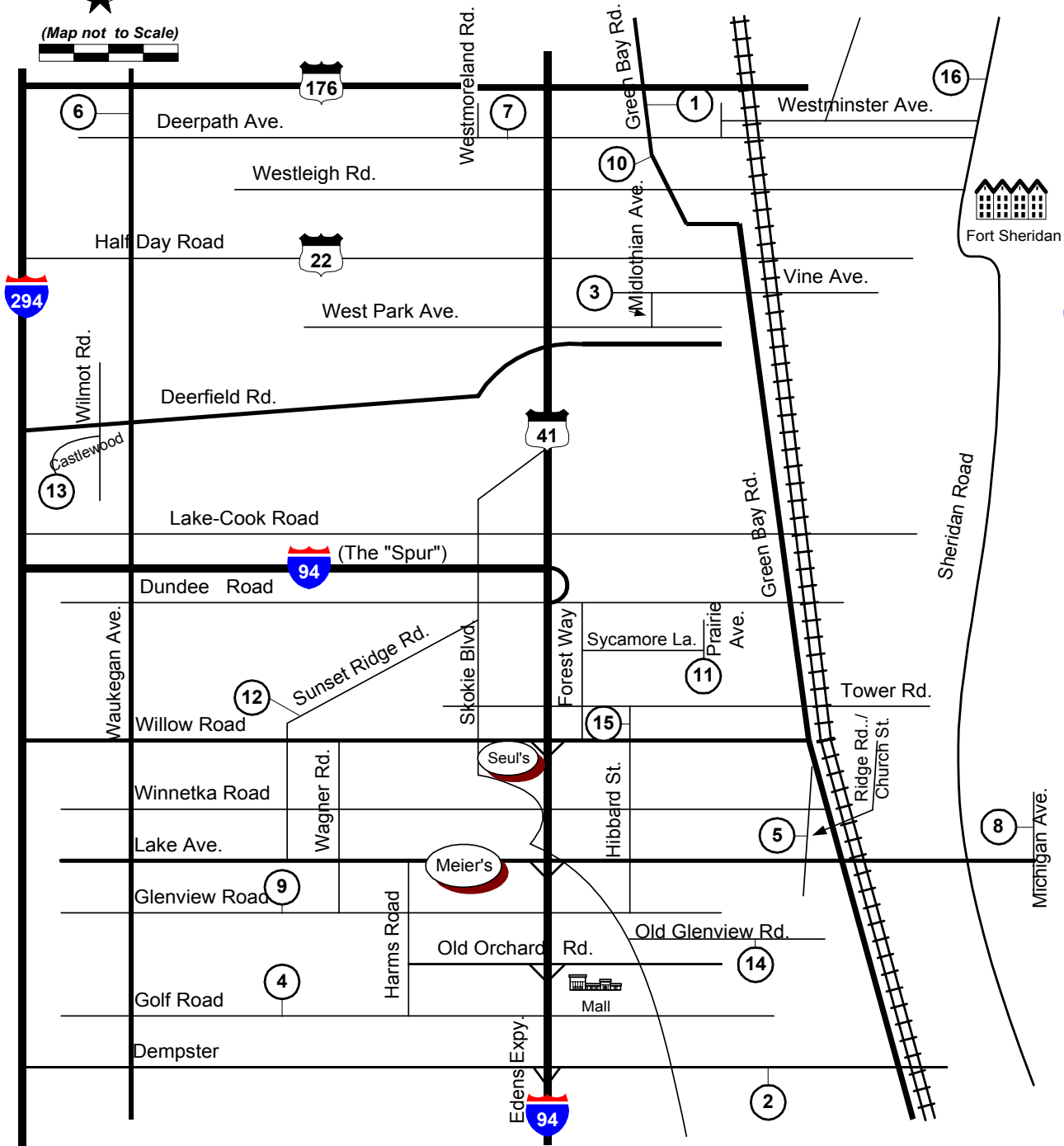
**Mail entries and checks to: John Noble, 2430 Lawndale Ave. Evanston, IL 60201**



# Chicago Area Platform Tennis



(Map not to Scale)



Lake Michigan



O'Hare Airport

<u>Club</u>	<u>Phone</u>	<u>Club</u>	<u>Phone</u>
1. Bath & Tennis Club	847.234-5001 (s)	9. North Shore CC	847.729-1200 x159 (s)
2. Evanston CC	847.676-1316	10. Onwentsia CC	847.234-1647
3. Exmoor CC	847.432-3600 x157 (s)	11. Skokie CC	847.835-9613
4. Glen View CC	847.657-0890	12. Sunset Ridge CC	847.446-9046
5. Indian Hill CC	847.251-6523	13. Tennaqua	847.945-2100 x8 (s)
6. Knollwood CC	847.234-1628	14. Westmoreland CC	847.853-4714
7. Lake Forest	847.234-5318	15. Winnetka	847.501-2079
8. Michigan Shores	847.251-4100 (s)	16. Winter Club	847.234-0030 (s)

(s) = switchboard, no direct line    Note: Meier's: 847.724-0477    Seul's: 847.441-8290