



THE CHICAGO PLATFORM TENNIS CHARITIES

APTA National Ranking Tournament & President's Cup Qualifier

November 5,6 & 7, 2004 (Page 1 - Schedule; Page 2 -Entry; Page 3 - Map)

LOCATION:

Chicago North Shore area clubs, semi-finals and finals at Glen View Club at 100 Golf Road, Golf, IL, Main Number 847-729-6500; Paddle House Number 847-657-0890.

ENTRIES:

Deadline: Saturday, October 30, 2004. No refunds after this date. **Full APTA membership is required for all national ranking tournaments.** Applications will not be accepted without both players' APTA numbers or without full payment. **To obtain a number call the APTA at (888) 744-9490 or access the web site at www.platformtennis.org.** Official APTA rules will govern play. All matches best of three sets. 12 point tie-breaker in all sets. Guaranteed 3 matches.

NOTES:

Men's Seniors 90+ (and Men's Seniors 115+) will require the combined ages of the players to be equal to or greater than 90 (or 115, respectively) as of January 1, 2005. There will be a foot fault judge roaming from site to site. The First call is played as a let, any call there after is a loss of point. *Rule 11 - APTA Official Rules of Platform Tennis.* **The judge's call will be final.**

AMENITIES:

Women's Open Tournament: Viking Balls, favor, Friday lunch & Saturday night barbeque. [Friday evening: informal gathering at Glen View Club, (not paid for by the tournament)].
Men's Open Tournament: Viking Balls, favor, Saturday lunch & Saturday night barbeque.
Men's Seniors Tournaments: Viking Balls, favor, (90's-Friday lunch), & Saturday night barbeque.

SCHEDULE:

No Women's check-in. Download Draw from the CPTC website (www.reveregroup.com/paddle) for starting times and locations for both Men & Women.

Friday, Nov. 5 th	8:30 am	Women's tournament play
	8:30 am	Men's Seniors 90+ check-in and continental breakfast at Exmoor CC
	9:00 am	Men's Seniors 90+ tournament play at Exmoor CC
	11:30 am - 1:30 pm	Women's lunch at Glen View Club
	12:00 pm	Men's Seniors 90+ lunch at Exmoor CC
	6:00 pm	Women's informal gathering at GVC Paddle Hut
Saturday, Nov. 6 st	6:00 pm - 9:00 pm	Men's check-in at GVC Paddle Hut
	8:00 am & 9:00 am	Men's Open tournament play
	8:30 am - 4:00 pm	Women's backdraw play
	11:00 am	Women's Semifinals at Glen View Club
	2:00 pm	Women's Finals at Glen View Club
	11:30 am - 1:00 pm	Men's lunch at Glen View Club
	12:00 pm	Men's Seniors 115+ tournament play begins at Exmoor CC
	4:30pm	Men's Quarterfinals at Glen View Club
Sunday, Nov. 7 th	5:00 pm	(cocktails begin at 4pm) Barbeque at Glen View Club Paddle Hut (casual attire)
	8:30 am	Men's Open backdraw play
	10:00 am	Men's Semifinals at Glen View Club
	1:00 pm	Men's Finals at Glen View Club

FOR ADDITIONAL INFORMATION, CONTACT:

	Men's Open and Women's Open	Men's Seniors 45's	Men's Seniors
55's	John Noble (Co-Chair) (W): 847-663-6935 (cell): 847-226-5030 john_noble@hyperion.com	Ellen Magrini (Co-Chair) (cell) 773-771-7179 ellenmagrini@aol.com	Howard Sipe (H): 847-295-7138 (W): 847-295-4186 sipe@ppg.com



32nd ANNUAL CPTC TOURNAMENT November 5th, 6th & 7th, 2004

ENTRY FORM (please detach and send separately)

Women's Open	\$85.00	per paddle	x _____	= \$ _____
Men's Open	\$85.00	per paddle	x _____	= \$ _____
Men's Seniors 90+	\$75.00	per paddle	x _____	= \$ _____
Men's Seniors 115+	\$75.00	per paddle	x _____	= \$ _____
Combined Events	\$130.00	per paddle	x _____	= \$ _____
Dinner Guest Saturday	\$35.00	per person	x _____	= \$ _____
Lunch Guests (Fri. or Sat.)	\$20.00	per person	x _____	= \$ _____
Total				\$ _____

WILL YOU _____ OR YOUR PARTNER _____ BE ATTENDING THE SATURDAY NIGHT BARBEQUE? (Place a checkmark next to those attending)

WILL THERE BE ADDITIONAL GUESTS ATTENDING THE SATURDAY NIGHT BARBEQUE? HOW MANY? _____ (Please enclose \$35.00 per guest)

Proceeds from this year's tournament will go to: RIGHT ANGLE. Right Angle is an educational foundation which provides financial support for high school students in the inner city. Right Angle sends about 60 high school kids to college summer programs to improve their academic skills and gain exposure to campus life. The majority of these students are from low-income families. Because of this program over 85% of the participating kids go on to 4 year colleges. What makes this so remarkable is that these students come from schools where the percentage of students who go on to 4 year colleges is typically less than 15%.

Charitable contribution: \$ _____

TOTAL: \$ _____

(Please make checks payable to: CPTC tournament. Additional contributions can be made out directly to: Right Angle

HOTELS: Renaissance North Shore, Northbrook, 847-498-6500; Red Roof Inn, Northbrook, 847-205-1755; Doubletree Hotel, Skokie, 847-679-7000; Extended Stay America, Skokie, 847-663-9031.

Mail entries and checks to: **Ellen Magrini, 927 Michigan Ave. Unit #3, Evanston, IL 60202**

Name: _____	Partner: _____
Address: _____	Address: _____
Phone: (H) _____	Phone: (H) _____
(W) _____	(W) _____
(e-mail) _____	(e-mail) _____
Club Affiliation: _____	Club Affiliation: _____
Current APTA #: _____	Current APTA #: _____

Separate checks payable to "APTA" for APTA membership: \$40.00 Annual Membership. If you are a member of Chicago area CPTC league play, your APTA membership fee has been included in your league fee (please make a note in "Current APTA #" section above if you are a "Chicago league player").

Mail entries and checks to: **Ellen Magrini, 927 Michigan Ave. Unit #3, Evanston, IL 60202**

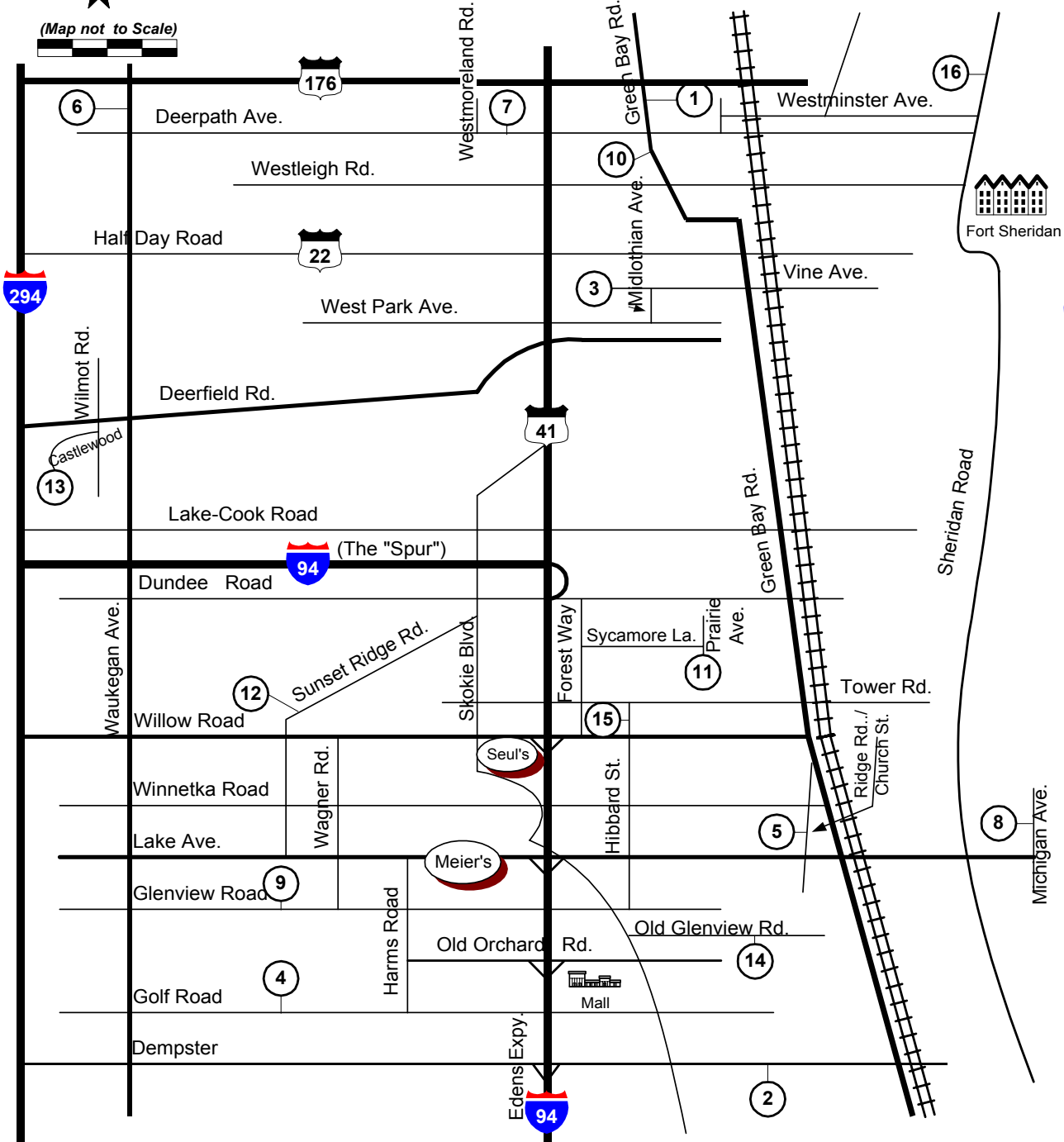
downloaded from

paddlept.com

Chicago Area Platform Tennis



(Map not to Scale)



Lake Michigan

Club	Phone	Club	Phone
1. Bath & Tennis Club	847.234-5001 (s)	9. North Shore CC	847.729-1200 x159 (s)
2. Evanston CC	847.676-1316	10. Onwentsia CC	847.234-1647
3. Exmoor CC	847.432-3600 x157 (s)	11. Skokie CC	847.835-9613
4. Glen View CC	847.657-0890	12. Sunset Ridge CC	847.446-9046
5. Indian Hill CC	847.251-6523	13. Tennaqua	847.945-2100 x8 (s)
6. Knollwood CC	847.234-1628	14. Westmoreland CC	847.853-4714
7. Lake Forest	847.234-5318	15. Winnetka	847.501-2079
8. Michigan Shores	847.251-4100 (s)	16. Winter Club	847.234-0030 (s)

(s) = switchboard, no direct line Note: Meier's: 847.724-0477 Seul's: 847.441-8290

